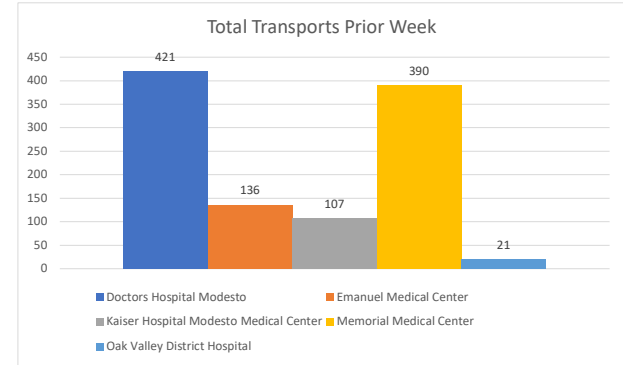
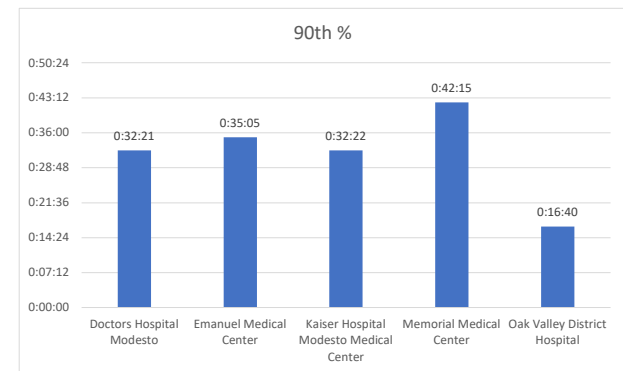
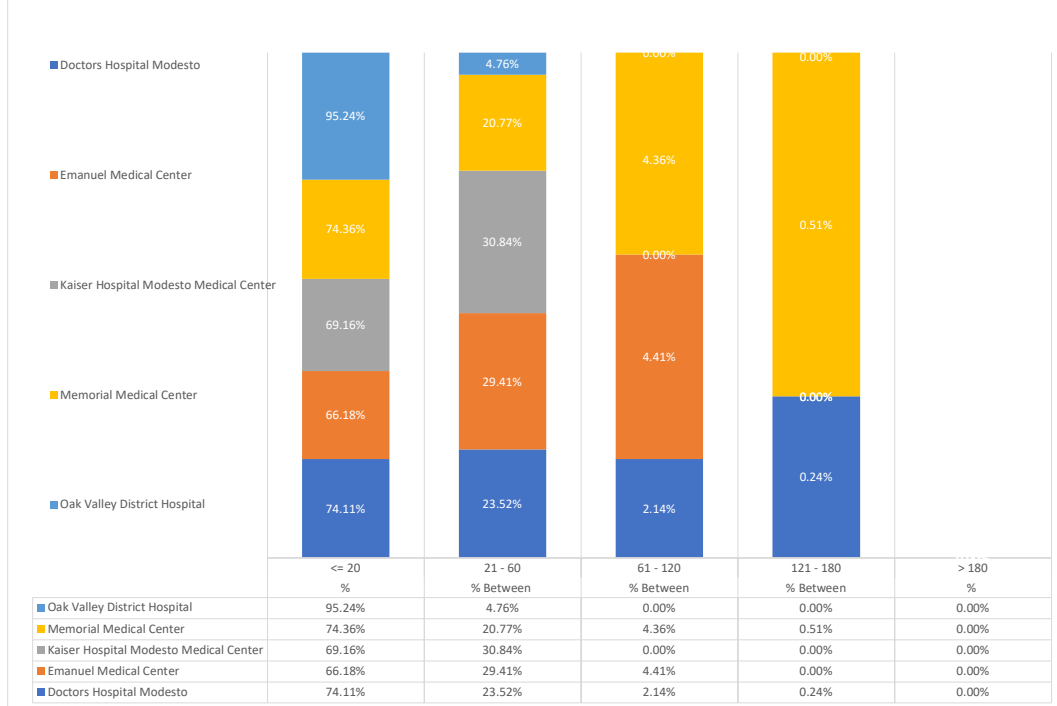


Stanislaus OES APOT
 Date Range:08/28/2022 to 09/03/2022
 Provider(s): AMR, Patterson, Oak Valley, Westside

Destination	90th %	Total Transports	Total <= 20	% <= 20	Total Between 21 - 60	% Between 21 - 60	Total Between 61 - 120	% Between 61 - 120	Total Between 121 - 180	% Between 121 - 180	Total > 180	% > 180
Doctors Hospital Modesto	0:32:21	421	312	74.11%	99	23.52%	9	2.14%	1	0.24%	0	0.00%
Emanuel Medical Center	0:35:05	136	90	66.18%	40	29.41%	6	4.41%	0	0.00%	0	0.00%
Kaiser Hospital Modesto Medical Center	0:32:22	107	74	69.16%	33	30.84%	0	0.00%	0	0.00%	0	0.00%
Memorial Medical Center	0:42:15	390	290	74.36%	81	20.77%	17	4.36%	2	0.51%	0	0.00%
Oak Valley District Hospital	0:16:40	21	20	95.24%	1	4.76%	0	0.00%	0	0.00%	0	0.00%
Stanislaus OES Total	0:33:55	1,075	786	73.12%	254	23.63%	32	2.98%	3	0.28%	0	0.00%



PRIOR WEEK APOT



● 90th % is the response time for 9 out of 10 calls.