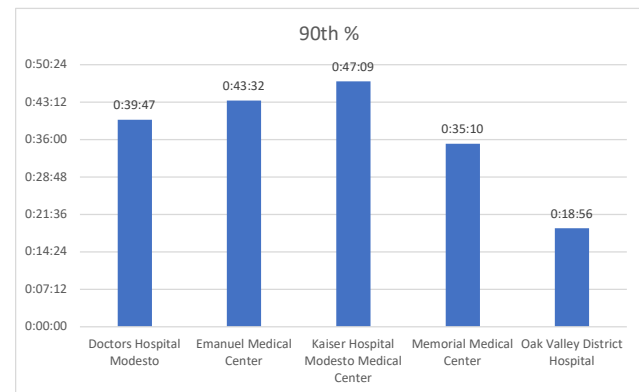
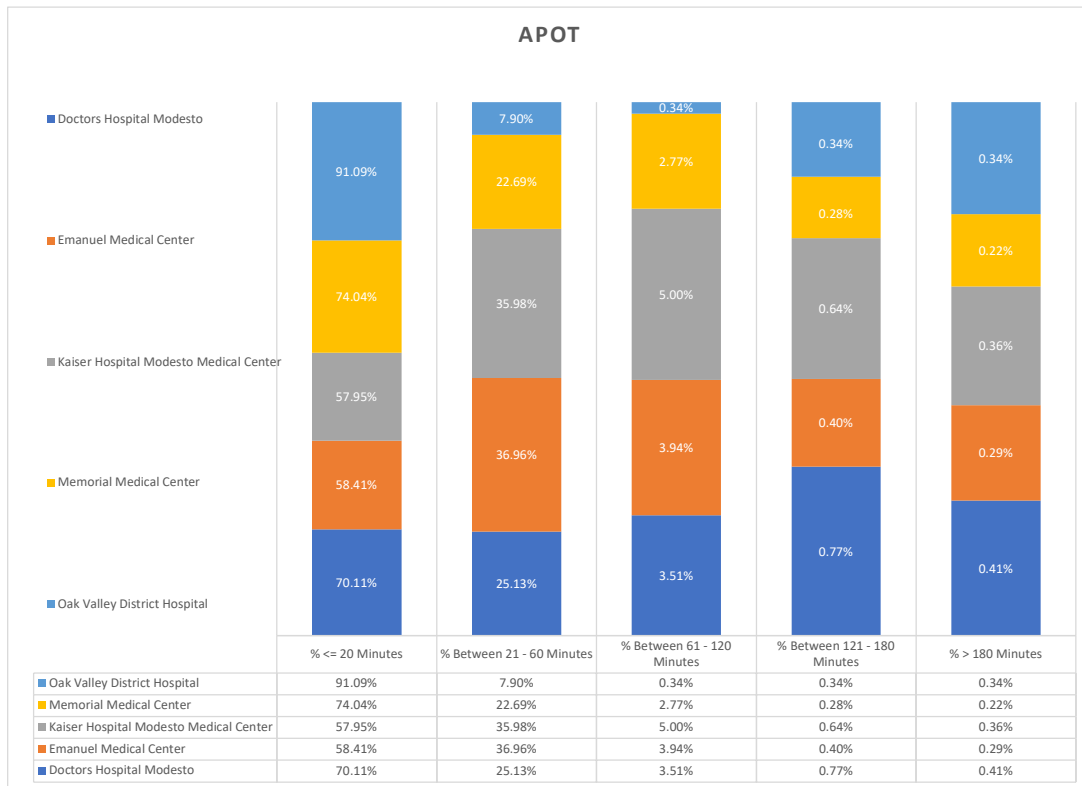
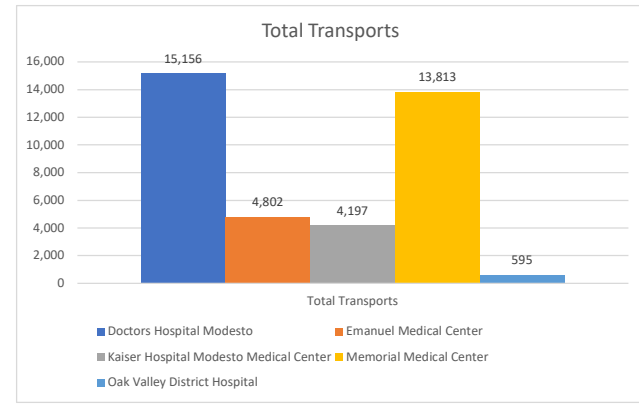


Stanislaus OES APOT
 Date Range: 01/01/2022 to 09/30/2022
 Provider(s): AMR, Patterson, Oak Valley, Westside

Destination	90th %	Total Transports	Total <= 20 Minutes	% <= 20 Minutes	Total Between 21 - 60 Minutes	% Between 21 - 60 Minutes	Total Between 61 - 120 Minutes	% Between 61 - 120 Minutes	Total Between 121 - 180 Minutes	% Between 121 - 180 Minutes	Total > 180 minutes	% > 180 Minutes
Doctors Hospital Modesto	0:39:47	15,156	10,626	70.11%	3,808	25.13%	532	3.51%	117	0.77%	62	0.41%
Emanuel Medical Center	0:43:32	4,802	2,805	58.41%	1,775	36.96%	189	3.94%	19	0.40%	14	0.29%
Kaiser Hospital Modesto Medical Center	0:47:09	4,197	2,432	57.95%	1,510	35.98%	210	5.00%	27	0.64%	15	0.36%
Memorial Medical Center	0:35:10	13,813	10,227	74.04%	3,134	22.69%	382	2.77%	38	0.28%	31	0.22%
Oak Valley District Hospital	0:18:56	595	542	91.09%	47	7.90%	2	0.34%	2	0.34%	2	0.34%
Stanislaus OES Totals	0:39:12	38,563	26,632	69.06%	10,274	26.64%	1,315	3.41%	203	0.53%	124	0.32%



● 90th % is the response time for 9 out of 10 calls.