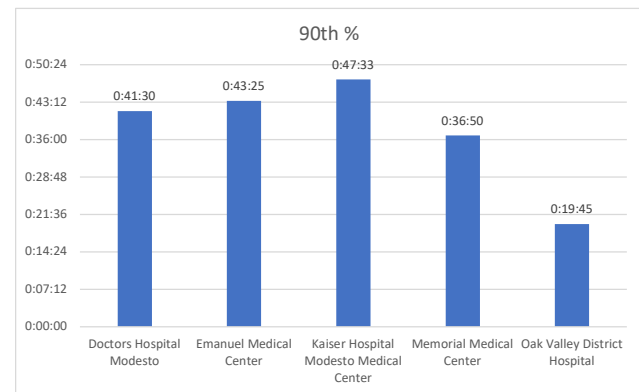
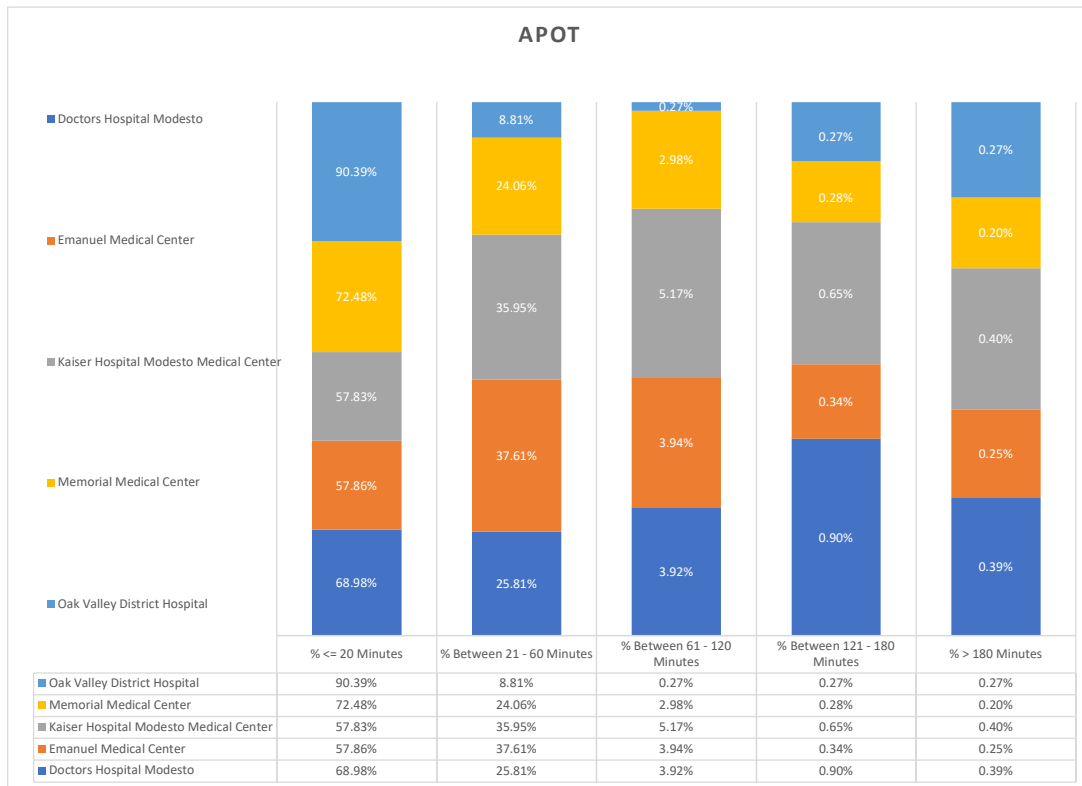
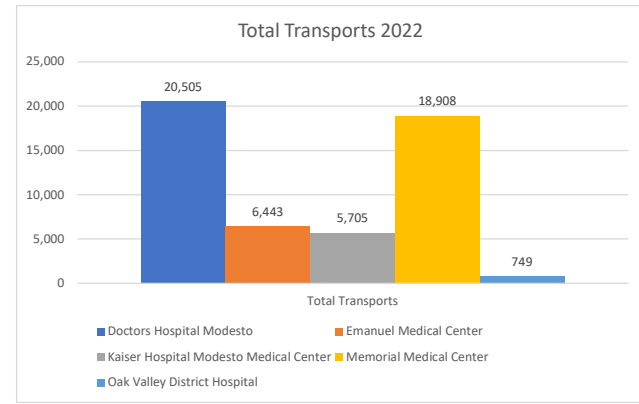


Stanislaus OES APOT
 Date Range: 01/01/2022 to 12/31/2022
 Provider(s): AMR, Patterson, Oak Valley, Westside

Destination	90th %	Total Transports	Total <= 20 Minutes	% <= 20 Minutes	Total Between 21 - 60 Minutes	% Between 21 - 60 Minutes	Total Between 61 - 120 Minutes	% Between 61 - 120 Minutes	Total Between 121 - 180 Minutes	% Between 121 - 180 Minutes	Total > 180 minutes	% > 180 Minutes
Doctors Hospital Modesto	0:41:30	20,505	14,144	68.98%	5,293	25.81%	804	3.92%	185	0.90%	79	0.39%
Emanuel Medical Center	0:43:25	6,443	3,728	57.86%	2,423	37.61%	254	3.94%	22	0.34%	16	0.25%
Kaiser Hospital Modesto Medical Center	0:47:33	5,705	3,299	57.83%	2,051	35.95%	295	5.17%	37	0.65%	23	0.40%
Memorial Medical Center	0:36:50	18,908	13,705	72.48%	4,550	24.06%	563	2.98%	52	0.28%	38	0.20%
Oak Valley District Hospital	0:19:45	749	677	90.39%	66	8.81%	2	0.27%	2	0.27%	2	0.27%
Stanislaus OES Totals	0:40:23	52,310	35,553	67.97%	14,383	27.50%	1,918	3.67%	298	0.57%	158	0.30%



● 90th % is the response time for 9 out of 10 calls.